

Insulation Tester + Datalogger

Autoranging insulation measurements to 4000M Ω with 250/500/1000V Test Voltages and 1mA test current

Features:

- Large dual 4000 count backlit LCD and fast 50 segment analog display
- Measure Insulation Resistance to 4000M Ω with 1k Ω resolution and 1mA test current
- Datalogging function stores up to 16,000 readings with single store or a programmable rate of 1 to 65,000 seconds per sample
- Audible continuity
- $\pm 3.0\%$ reading basic insulation resistance accuracy
- 3 minute test lock function for convenience and efficiency
- 600V Overload Protection
- Data Hold
- AC Voltage function
- RS-232 PC interface with Windows[®] 95/98/NT/2000/ME/XP compatible Data Acquisition Software
- Open circuit, overrange and low battery indications
- Meter is built into rugged case with cover
- Complete with built-in carrying case with test leads, alligator clips, RS-232 PC cable, software, neckstrap and 8 AA batteries

Applications:

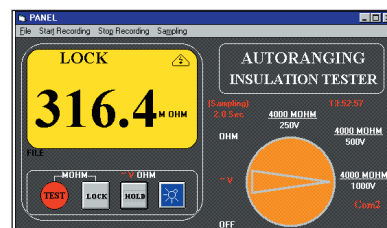
- Regulatory compliance testing
- Appliance Safety Check
- Wire/cable testing

Specifications:	Range	Resolution	Basic Accuracy
Insulation Resistance (Ω):	4M, 40M, 400M, 4000M	1k Ω	$\pm(3\% \text{ rdg} + 5 \text{ digits})$
AC Voltage:	600V	0.1V	$\pm(1.5\% \text{ rdg} + 3 \text{ digits})$
Low Resistance:	400 Ω	0.1 Ω	$\pm(1\% + 5 \text{ digits})$
Test Voltages:	250, 500, 1000V		
Display:	4000 count backlit LCD with 50 segment analog bargraph		
Applicable standards:	IEC1010 CAT II-1000V, CAT III-600V; VDE 0143		
Power supply:	8 AA batteries		
Dimensions:	7.9 x 5.5 x 3.7" (200 x 140 x 95mm)		
Weight:	29oz (900g)		

CE **CAT III-600V**

Ordering Information:

380366Insulation Tester + Datalogger
380366-NIST ..Insulation Tester + Datalogger w/NIST



PC Display

EXTECH INSTRUMENTS CORPORATION
 285 Bear Hill Road, Waltham, MA 02451-1064, U.S.A.
 Phone: 781-890-7440 • FAX 781-890-7864

ISO 9001:2000 CERTIFIED

"Make mine an Extech!"[™]
www.extech.com



05/02/05 - R1